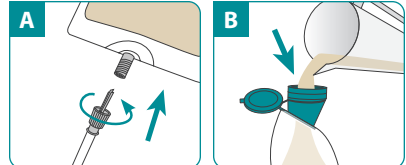


Priming and Loading the Disposable Set

These instructions are not a substitute for the operator's manual. Be sure to read the operator's manual thoroughly prior to operating the pump. See other side for pump operation instructions.

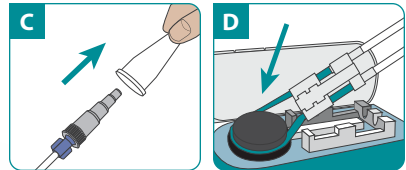
STEP 1

- If you are using the Infinity Spike set, remove protective cover from connector and insert connector tip into compatible port on the enteral formula container (image A). Secure the connector by tightly screwing threaded components together.
- If you are using the 500 mL or 1200 mL disposable set, hold the bag's funnel upright and pour in feeding formula. Close cap tightly and hang bag (image B).



STEP 2

Remove protective cover from the feeding tube connector (image C).



STEP 3 - PRIMING

IF PUMP PRIMING: Loop the silicone tubing around the pump wheel stretching lightly. Seat cassette into the pump and close the door (image D).

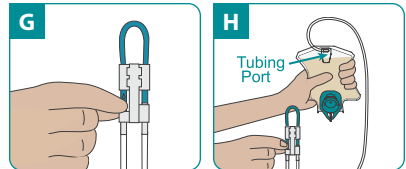
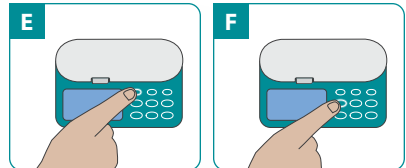
Turn pump on by pressing and holding the **ON/OFF** key until the pump beeps (image E). Then, press and hold the **PRIME** key until formula reaches the feeding tube connector (image F).

NOTE: If your pump is equipped with an auto prime option, refer to the Operator's Manual for details.

IF MANUAL PRIMING: Gently pinch teal colored tubing below the "O" symbol (image G). While pinching, gently squeeze the bag at the same time to assist fluid flow. Hold this position until formula reaches the feeding tube connector.

Loop silicone tubing around pump wheel stretching lightly. Seat cassette into pump (image D). Close pump door.

FOR BACKPACK USE: Turn the bag upside down and tilt the bag to keep air at tubing port (image H). Gently pinch teal colored tubing below the "O" symbol (image G). While pinching, gently squeeze the bag at the same time to assist fluid flow. Hold this position until formula reaches the feeding tube connector.



Speak live with a Moog Clinical Representative for pump questions and troubleshooting guidance 24 hours per day, 7 days per week.

Clinical & Customer Support **800.970.2337**

Visit infinityfeedingpump.com for additional information

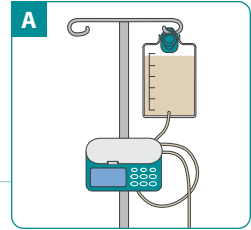
MOOG[®]



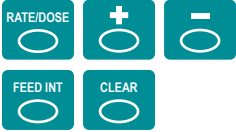

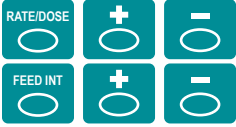




Enhancing Healthcare.
Enriching Lives.™

Programming and Running the Pump

These instructions are not a substitute for the operator's manual.

Be sure to read the operator's manual thoroughly prior to operating the pump. See other side for pump operation instructions.



<p>Hang the feeding container</p>	<p>Hang feeding container so that the bottom of the bag is at or above the level of the pump door (image A).</p>	
<p>Turn on the pump</p>	<p>Press and hold the ON/ OFF key for 1.5 seconds to turn the pump on. The display will show the last programmed rate.</p>	
<p>To program the rate (how fast your pump runs)</p>	<p>Press the RATE/DOSE key to display "RATE" in the lower-left corner of the screen. Use the + and - keys to program the rate.</p>	
<p>To program the dose (how much is to be fed)</p>	<p>Press the RATE/DOSE key to display "DOSE" in the lower-left corner of the screen. Use the + and - keys to program the dose. Note: If "FEED INTERVAL" is on the display, clear feeding interval by pressing the FEED INT key, then press the CLEAR key.</p>	
<p>To program a continuous feeding (rate only setting)</p>	<p>If "FEED INTERVAL" is on the display, clear feeding interval by pressing the FEED INT key, then press the CLEAR key. Press the RATE/DOSE key twice to display "DOSE" in the lower-left corner of the screen, and hold the + key until the displays reads INF.</p>	
<p>To program an interval feeding (or intermittent feeding)</p>	<p>Press the RATE/DOSE key to display "DOSE" in the lower-left corner of the screen. Use the + and - keys to program the dose. Press the FEED INT key to display "FEED INTERVAL" in the lower-left corner of the screen. Program the desired number of hours and minutes using the + and - keys.</p>	
<p>Start the pump</p>	<p>Press the RUN/PAUSE key to start the pump.</p>	
<p>When feeding is complete</p>	<p>When feeding is complete, press the ON/OFF key for 1.5 seconds to turn the pump off.</p>	
<p>To clear settings</p>	<p>Press the CLEAR key to reset the displayed value. Press and hold the CLEAR key for 3 seconds to reset rate, dose, feed interval, and volume delivered values at the same time.</p>	
<p>View volume delivered</p>	<p>Press the VOL/TOTAL key once to display volume delivered for the current feeding. Press the key again to display the total cumulative volume delivered since the total volume was last reset.</p>	

MOOG®

Enhancing Healthcare.
Enriching Lives.™